

# Cree Urban Series

ARTISTIC - LED Lantern

## Product Description

A variety of LED decorative luminaires that range from a classic, elegant design to a more essential and modern one, conceived for urban decor lighting projects. Each lantern model has a particular style optimised for day-time and nightscape appearance, featuring an easy installation mounting system. Capable of saving more than 50 percent energy compared to traditional source technologies, the Cree Urban Series luminaires also provide improved lighting quality that contributes to creating a safe and inviting site.

**Applications:** historic urban settings, plazas and parks, residential roadways and walkways.

## Performance Summary

NanoOptic® Precision Delivery Grid™ optic

**Initial Delivered Lumens:** up to 6200 lm

**CRI:** Minimum 70 CRI

**CCT:** 3000K or 4000K or 5700K

**Lifetime color consistency:** 4SDM

**Limited Warranty\*:** 5 years on luminaire



## Ordering Information

Example: UAR-A-F-2LG-B-30K-+24-BK-FA-S-01

| UAR     | - A     | - F  | - 2LG   | - B                    | - 30K  | - +                            | - 24             | - BK  | - FA   | - S             | - 01  |
|---------|---------|--|---|------------------------|--|--------------------------------|------------------|---|--|-----------------|---|
| Product | Version | Mounting   | Optic   | Input Power Designator | CCT  | Insulation Class               | Voltage          | Color   | Options  | Variant         | Cable length                                |
| UAR     | - A     | - F<br>Post-top<br>9<br>Suspended<br>L*<br>Rigid cord<br>suspended | - 2LG<br>Type II long<br>275<br>Type II short 0.75<br>210<br>Type II short 1,0<br>2SH<br>Type II short<br>3SH<br>Type III short<br>3ME<br>Type III medium<br>4ME<br>Type IV medium<br>5ME<br>Type V medium<br>5SH<br>Type V short | - A 45W                | - 30K<br>3000K<br>40K<br>4000K<br>57K<br>5700K | - +<br>Class 1<br>^<br>Class 2 | - 24<br>220-240V | - BK<br>Black<br>CI<br>Classic<br>Ivory<br>HB<br>Heritage<br>Brown<br>BG<br>Brutalist<br>Grey<br>LG<br>Landscape<br>Green | - FA<br>Field Adjustable<br>Output<br>VM<br>Virtual Midnight | - S<br>Standard | - 01<br>Exit cable<br>50cm<br>(w/connector) |

\*\* Fuse option available with Standard or 10kV configurations (specify SF or UF)

\* Mounting "L" to be completed with dedicated bracket

|                |                            |
|----------------|----------------------------|
| PM-L/URB/A2-GR | Rigid cord bracket AISI304 |
|----------------|----------------------------|

\* See [www.cree.com/lighting/products/warranty](http://www.cree.com/lighting/products/warranty) for warranty terms



[www.cree-europe.com](http://www.cree-europe.com)

Ph. +39 055 343081

Rev. Date: 01 June 2018



# Cree Urban High Output - ARTISTIC - LED Lantern

## Product Specifications

LED lantern featuring a historical, classic design. Powered by Cree technology and featuring the NanoOptic® Precision Delivery Grid™ optic system.

### CONSTRUCTION & MATERIALS

- Die cast aluminum housing
- Mounting system: Post-top
- Standard color: Black
- High resistance powder coating with increased anti-ageing and anti-corrosion performance
- Weight: 9kg

### ELECTRICAL SYSTEM

- **Input Voltage:** 220-240V or 50/60Hz
- **Power Factor:** > 0.95 at full load
- **Total Harmonic Distortion:** < 20% at full load
- Field Adjustable Output option
- Stand-alone Virtual Midnight field programmable option
- 6 kV surge protection per EN 61000-4-5

### REGULATORY & VOLUNTARY QUALIFICATIONS

- CE listed
- Risk group exempt in accordance with Standard EN 62471 for photobiological safety
- Enclosure rated IP65 per IEC 60529
- RoHS compliant

| Electrical Data*       |                          |               |
|------------------------|--------------------------|---------------|
| Input Power Designator | System Watts<br>220-240V | Total Current |
| A                      | 45                       | 230V<br>0.20  |

\*Electrical data at 25°C (77°F)

| Virtual Midnight |                                    |        |
|------------------|------------------------------------|--------|
| Option code      | Description                        |        |
| VM0              | 38W - Virtual Midnight 24:00-06:00 | 38/27W |
| VM1              | 43W - Virtual Midnight 24:00-06:00 | 43/30W |
| VM2              | 45W - Virtual Midnight 24:00-06:00 | 45/32W |
| VM3              | 27W - Virtual Midnight 24:00-06:00 | 27/19W |
| VM4              | 29W - Virtual Midnight 24:00-06:00 | 29/20W |
| VM5              | 34W - Virtual Midnight 24:00-06:00 | 34/24W |
| VM6              | 38W - Virtual Midnight 24:00-06:00 | 38/19W |
| VM7              | 43W - Virtual Midnight 24:00-06:00 | 43/22W |
| VM8              | 45W - Virtual Midnight 24:00-06:00 | 45/23W |

| Field Adjustable Output |             |
|-------------------------|-------------|
| Option code             | Description |
| FA9                     | 19W Fixed   |
| FAA                     | 27W Fixed   |
| FAB                     | 29W Fixed   |
| FAC                     | 34W Fixed   |
| FAD                     | 38W Fixed   |
| FAE                     | 43W Fixed   |
| FAF                     | 45W Fixed   |

| Mounting Systems                                  |  |  |  |
|---|--|--|--|
| <p><b>F</b><br/>POST-TOP</p> <p>Weight: 8.3kg</p> | <p><b>9</b><br/>SUSPENDED</p> <p>Weight: 8.5kg</p> | <p><b>L*</b><br/>RIGID CORD SUSPENDED</p> <p>Weight: 8.5kg</p> |  |

| *Accessories for mounting system 9 (Suspended) - Adaptors  |  |   |   |
|--|--|---|---|
| <p><b>MALE CONNECTION</b></p> <p>AD0011S03V - External thread 1" 1/8<br/>AD0012S03V - External thread 1"<br/>AD0013S03V - External thread 3/4"<br/>AD0014S03V - External thread 1/2"</p> | <p><b>FEMALE CONNECTION</b></p> <p>AD0006S03V - Internal thread 1" 1/8<br/>AD0008S03V - Internal thread 1"<br/>AD0009S03V - Internal thread 3/4"<br/>AD0010S03V - Internal thread 1/2"</p> | <p><b>PIVOTING CONNECTION</b></p> <p>AD0015S03V</p> | <p><b>PIVOTING CONNECTION</b></p> <p>AD0016S03V</p> |

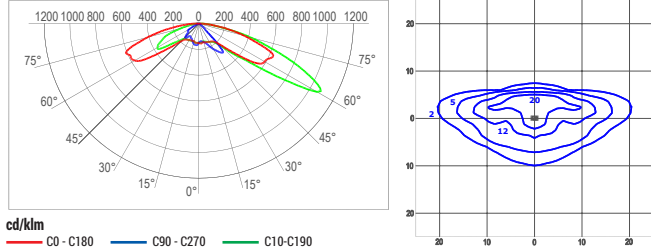
© 2018 Cree, Inc. and/or one of its subsidiaries. All rights reserved. For informational purposes only. Content subject to change. See [www.cree.com/patents](http://www.cree.com/patents) for patents that cover these products. Cree®, the Cree logo and NanoOptic® are registered trademarks, and Precision Delivery Grid™ are trademarks of Cree, Inc. or one of its subsidiaries.

# Cree Urban High Output - ARTISTIC - LED Lantern

## Photometry

All published luminaire photometric testing performed to IESNA LM-79-08 standards by a NVLAP certified laboratory. To obtain an IES file specific to your project consult: <http://www.cree-europe.com>.

### 2LG - Type II Long



cd/klm  
 C0 - C180 C90 - C270 C10 - C190

lux

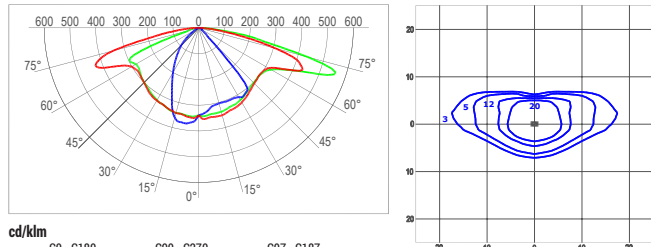
Test Report #: PL11703-010

UCRA92LGA40K  
 Mounting Height: 6m

| Lumen Output - 2LG (Type II Long) |       |       |       |
|-----------------------------------|-------|-------|-------|
| Input Power Designator            | 5700K | 4000K | 3000K |
|                                   | A     | 5995  | 5958  |

\* Initial delivered lumens at 25°C (77°F). Actual production yield may vary between -4 and +10% of initial delivered lumens

### 275 - Type II Short 0.75



cd/klm  
 C0 - C180 C90 - C270 C07 - C187

lux

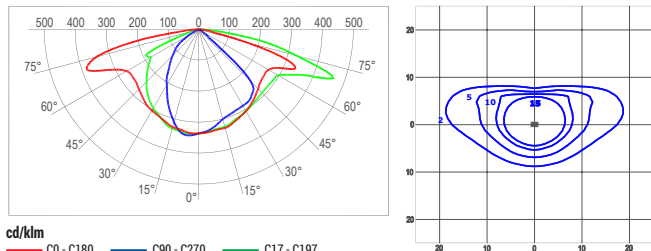
Test Report #: PL11703-010

UCRA9275A40K  
 Mounting Height: 6m

| Lumen Output - 275 (Type II Short 0.75) |       |       |       |
|---|-------|-------|-------|
| Input Power Designator                  | 5700K | 4000K | 3000K |
|   | A     | 6146  | 6109  |

\* Initial delivered lumens at 25°C (77°F). Actual production yield may vary between -4 and +10% of initial delivered lumens

### 210 - Type II Short 1.0



cd/klm  
 C0 - C180 C90 - C270 C17 - C197

lux

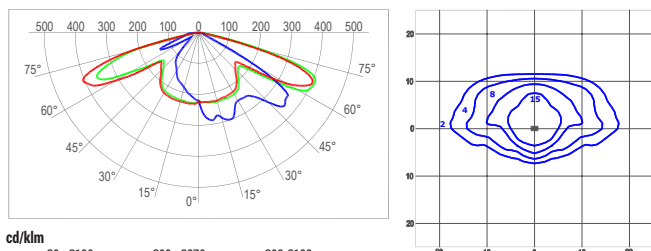
Test Report #: PL11703-010

UCRA9210A40K  
 Mounting Height: 6m

| Lumen Output - 210 (Type II Short 1.0) |       |       |       |
|--|-------|-------|-------|
| Input Power Designator                 | 5700K | 4000K | 3000K |
|  | A     | 6206  | 6168  |

\* Initial delivered lumens at 25°C (77°F). Actual production yield may vary between -4 and +10% of initial delivered lumens

### 2SH - Type II Short



cd/klm  
 C0 - C180 C90 - C270 C02 - C182

lux

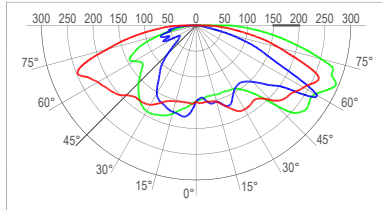
Test Report #: PL11703-029

UCRA92SHA40K  
 Mounting Height: 6m

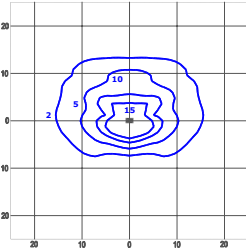
| Lumen Output - 2SH (Type II Short) |       |       |       |
|------------------------------------|-------|-------|-------|
| Input Power Designator             | 5700K | 4000K | 3000K |
|                                    | A     | 6248  | 6210  |

\* Initial delivered lumens at 25°C (77°F). Actual production yield may vary between -4 and +10% of initial delivered lumens

**3SH - Type III Short**



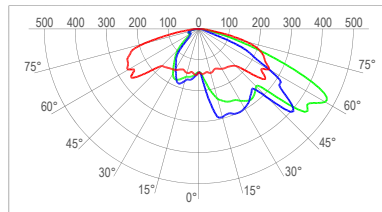
cd/klm  
 C0 - C180 C90 - C270 C30 - C210



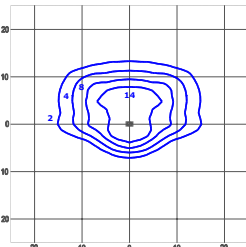
lux  
 UCRA93SHA40K  
 Mounting Height: 6m

Test Report #: PL11703-030

**3ME - Type III Medium**



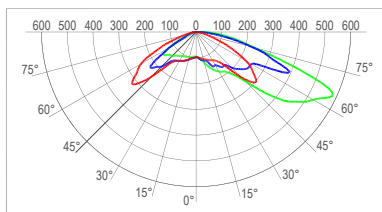
cd/klm  
 C0 - C180 C90 - C270 C47 - C227



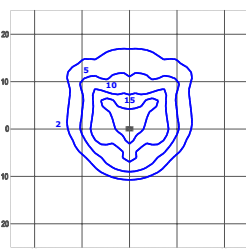
lux  
 UCRA93MEA40K  
 Mounting Height: 6m

Test Report #: PL11703-031

**4ME - Type IV Medium**



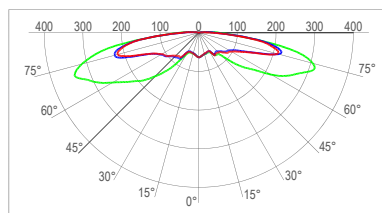
cd/klm  
 C0 - C180 C90 - C270 C45 - C225



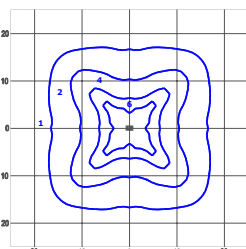
lux  
 UCRA94MEA40K  
 Mounting Height: 6m

Test Report #: PL11703-032

**5ME - Type V Medium**



cd/klm  
 C0 - C180 C90 - C270 C45 - C225



lux  
 UCRA95MEA40K  
 Mounting Height: 6m

Test Report #: PL07327-001

| Lumen Output - 3SH (Type III Short) |       |       |       |
|-------------------------------------|-------|-------|-------|
| Input Power Designator              | 5700K | 4000K | 3000K |
|                                     | A     | 5708  | 5673  |

\* Initial delivered lumens at 25°C (77°F). Actual production yield may vary between -4 and +10% of initial delivered lumens

| Lumen Output - 3ME (Type III Medium) |       |       |       |
|--------------------------------------|-------|-------|-------|
| Input Power Designator               | 5700K | 4000K | 3000K |
|                                      | A     | 6000  | 5963  |

\* Initial delivered lumens at 25°C (77°F). Actual production yield may vary between -4 and +10% of initial delivered lumens

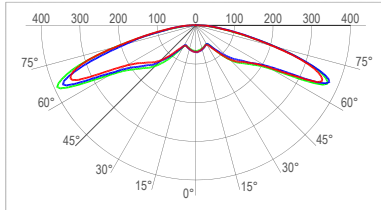
| Lumen Output - 4ME (Type IV Medium) |       |       |       |
|-------------------------------------|-------|-------|-------|
| Input Power Designator              | 5700K | 4000K | 3000K |
|                                     | A     | 6215  | 6177  |

\* Initial delivered lumens at 25°C (77°F). Actual production yield may vary between -4 and +10% of initial delivered lumens

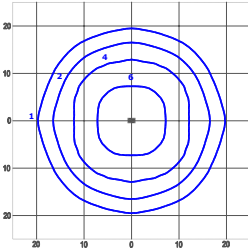
| Lumen Output - 5ME (Type V Medium) |       |       |       |
|------------------------------------|-------|-------|-------|
| Input Power Designator             | 5700K | 4000K | 3000K |
|                                    | A     | 4901  | 4671  |

\* Initial delivered lumens at 25°C (77°F). Actual production yield may vary between -4 and +10% of initial delivered lumens

**5SH - Type V Medium**



cd/klm  
 C0 - C180    C90 - C270    C50 - C230



lux

Test Report #: PL07330-001

UCRA95SHA40K  
 Mounting Height: 6m

| Lumen Output - 5SH (Type V Medium) |                           |                           |                           |
|------------------------------------|---------------------------|---------------------------|---------------------------|
| Input Power Designator             | 5700K                     | 4000K                     | 3000K                     |
|                                    | Initial Delivered Lumens* | Initial Delivered Lumens* | Initial Delivered Lumens* |
| A                                  | 5593                      | 5331                      | 4370                      |

\* Initial delivered lumens at 25°C (77°F). Actual production yield may vary between -4 and +10% of initial delivered lumens